

491900

492000

492100



**SKYHARBOUR**  
RESOURCES LTD.

**Moore Uranium Project**  
2018 Fall Drilling  
Maverick and Maverick East Zones

**ML-199:**  
6.0% U3O8 over 5.9m  
incl. 20.8% U3O8 over 1.5m

**ML18-08:**  
2.069% U3O8 over 3.5m

**ML-208:**  
2.25% U3O8 over 3.0m

**ML-213:**  
0.757% U3O8 over 10.4m  
incl. 1.56% U3O8 over 3.5m  
Re-drill of ML-203

**ML18-07**

**ML18-14:**  
0.561% U3O8 over 15.2m  
incl. 1.564% U3O8 over 5.0m  
incl. 3.109% U3O8 over 1.8m

**Historic Drill Hole ML-61:**  
4.03% eU3O8 over 10m

**ML18-15:**  
1.334% U3O8 over 7.8m  
incl. 2.907% U3O8 over 1.5m

**ML18-09:**  
1.014% eU3O8 over 6.3m  
incl. 3.065% eU3O8 over 1.8m

**ML-211:**  
0.127% U3O8 over 8.5m

**ML-212:**  
0.193% U3O8 over 3.4m

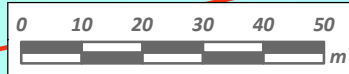
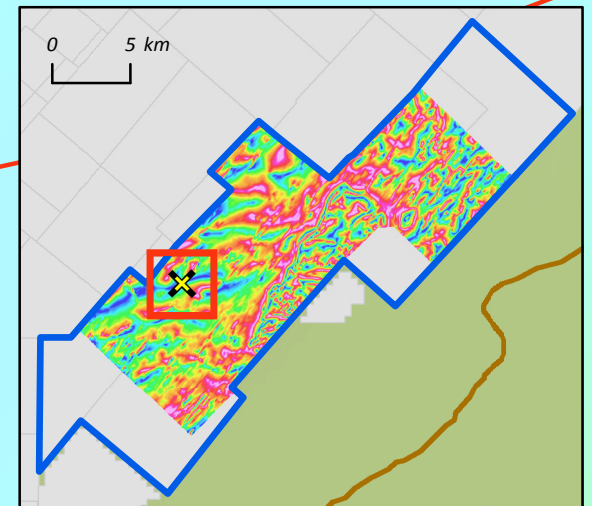
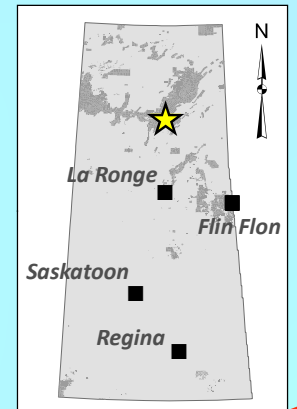
**ML17-09:**  
1.41% U3O8 over 1.5m  
(basement hosted)

**ML17-10:**  
2.23% U3O8 over 9.3m  
incl. 7.4% U3O8 over 1.8m

**ML-200:**  
1.62% U3O8 over 9.5m  
incl. 2.99% U3O8 over 5.0m

**ML-202:**  
1.79% U3O8 over 11.5m  
incl. 4.17% U3O8 over 4.5m  
incl. 9.12% U3O8 over 1.4m

**ML-210:**  
0.1% eU3O8 over 1.0m



- 2018 Drill Hole - Mineralized
- 2018 Drill Hole
- Historic Drill Hole
- Mineralized Zone
- Athabasca Basin Margin
- X Active or Depleted Uranium Mine
- X Mineral Deposit / Discovery
- ~ EM Conductors
- ~ River / Creek
- + Skyharbour Tenure
- + Other Mineral Tenure
- Magnetics - RMI
- High
- Low

491900

492000

492100

6363800

6363700

6363800

6363700